



SPECIFICATION

EcoMini

Product Details

S/N Rules

$\frac{SL}{1} - \frac{M65}{2} \frac{X}{3} \frac{X}{4} - \frac{XX}{5} - \frac{X}{6} \frac{X}{7}$

EX: $\frac{SL}{1} - \frac{M65F2}{2} \frac{20}{34} \frac{PB}{5} \frac{67}{67}$

- 1: SL-ShineLong
- 2: M65: EcoMini IP65 Mini tri-proof
- 3: X-Cover Type (F: Frosted cover)
- 4: X-Length, (2: 2ft 60cm, 4: 4ft 120cm, 5: 5ft 150cm)
- 5: XX-Power consumption (20: 20w, 30: 30w,40: 40w, 50: 50w, 60: 60w)
- 6: X-Color Temperature (W: Warm white, P: Pure white, C: Cold white)
- 7: X-Function Type (B: Battery, Emergency function , D: 0/1-10V dimmable,L: DALI dimmable)

Application

- Parking place
- Railway Station
- Corridor / Gallery
- Warehouse

Features

- Unique patent design, CE, ROHS listed
- Water-proof , Dust-proof, Damp-proof, Vapor-proof
- IP65 IK07
- Mitsubishi PC housing, Anti-UV
- 100~110lm/w or 120~130lm/w
- Long lifespan 50,000hrs
- 5 years warranty

Temperature

Operating: -20 ~ +50°C

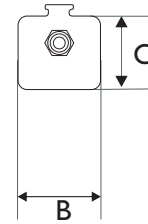
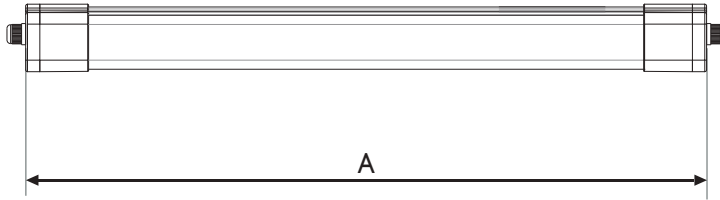
Storage: -40 ~ +85°C



Product Details



Dimension



length

A

B

C

Min.mm

Min.mm

Max.mm

Min.mm

600

600

69

70

61

1200

1200

69

70

61

1500

1500

69

70

61

Data Sheet

Article Number	Size	Power	LEDs	Beam Angle	CRI	AC Input	DC Output	SDCM	Efficiency (±5%)	Lumen Output
Standard Lumen Version										
SL-M65X2-20-X	600*70*61mm	20W	156	120°	>80	100~240V/100~277V	30~40V	<4	100~110lm/w	1900~2300lm
SL-M65X4-30-X	1200*70*61mm	30W	260	120°	>80	100~240V/100~277V	30~40V	<4	100~110lm/w	2900~3100lm
SL-M65X5-40-X	1500*70*61mm	40W	312	120°	>80	100~240V/100~277V	30~40V	<4	100~110lm/w	3800~4200lm
Premium Lumen Version										
SL-M65X2-20-X	600*70*61mm	20W	156	120°	>80	100~240V/100~277V	30~40V	<4	120~130lm/w	2300~2500lm
SL-M65X4-30-X	1200*70*61mm	30W	260	120°	>80	100~240V/100~277V	30~40V	<4	120~130lm/w	3500~3800lm
SL-M65X5-40-X	1500*70*61mm	40W	312	120°	>80	100~240V/100~277V	30~40V	<4	120~130lm/w	4600~5000lm

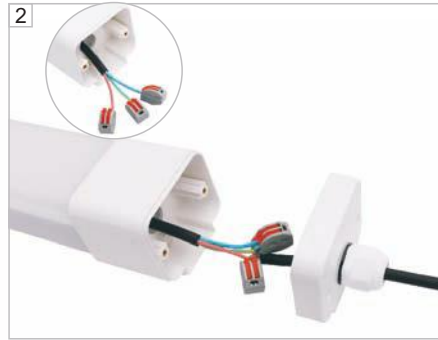
Different wattage can be customized

Wiring Method

■ Detachable end cap / Fit for self-mounted connection



Loosen the screws by tooling



Open the end cap and insert your local cable to terminals as per corresponding cable marks



Lock the end caps up and fasten the connector well

■ Series Connection

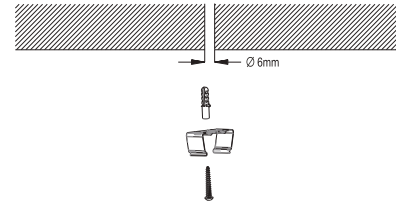


Ceiling Mounted Installation

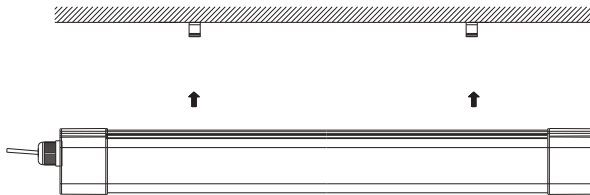
① Drill $\Phi 6\text{mm}$ holes on the roof/wall.



② Insert $\Phi 6\text{mm}$ expansion pipe into the hole and fix the bracket by M4 screw.



③ Ceiling Installation.

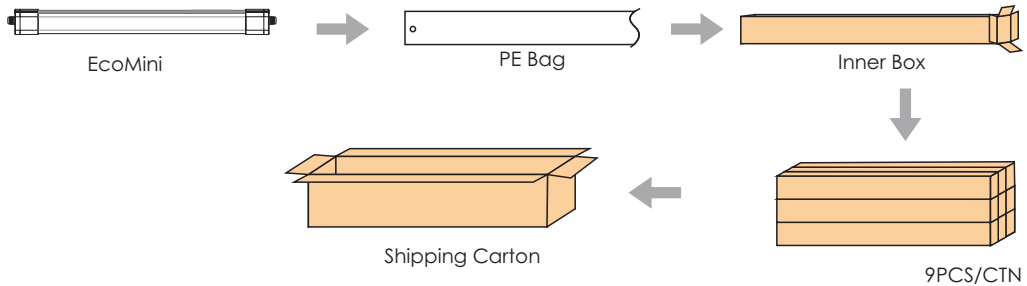


④ Put the lamp insert into the installed clips on the ceiling accordingly, then rotate the clips inside the lamp to lock it.



Package

Item code	Dimension	Carton Size	N.W.(kg)/CTN	G.W.(kg)/CTN	Maximum Loading of		
					20'GP	40'GP	40'HQ
SL-M65X2-20-X	600*70*61mm	680*240*245mm	7	9	512CTNs	1072CTNs	1260CTNs
SL- M65X4-30-X	1200*70*61mm	1280*240*245mm	9.5	13	278CTNs	576CTNs	688CTNs
SL- M65X5-40-X	1500*70*61mm	1680*240*245mm	13.5	17	222CTNs	468CTNs	526CTNs



All the above information is subject to the final interpretation of ShineLong Technology.